



From factory to dealer



Wallenius Wilhelmsen Logistics (WWL) is a leading independent provider of global factory-to-dealer transport solutions for the automotive, agricultural and construction equipment industries.

To give customers a competitive edge, we combine logistics expertise, global reach and local knowledge.

Global reach, local knowledge

With offices throughout the Americas, Asia, Europe and Oceania, WWL has operations that span the globe, connecting people, places and information. This integrated global network provides reliable, on-time delivery – from factory to dealer. At the very heart of the network are the people in our organisation who bring with them unmatched expertise, a global mindset, and a commitment to exceed customer expectations. WWL offers a comprehensive range of outbound logistics solutions – from supply chain management and ocean transportation to terminal services, technical services and inland distribution.

Supply chain management

From purchasing and contracting services to managing operations, information systems, quality, performance, and financial services, WWL handles all aspects of the outbound supply chain. By optimising the physical flow of goods as well as the flow of information, we bring speed, accuracy, improved visibility and cost-efficiency to the outbound supply chain.

Ocean transportation

With its century-old maritime heritage, WWL understands customer transportation requirements. Annually we carry 2 million cars, rolling equipment and static cargo up to 50m long, 7m high and 320 tonnes in weight to most global destinations on our modern fleet of roll-on/roll-off vessels.

Terminal services

To make import and export operations at transport terminals more efficient, WWL operates its own terminals at strategic locations in Europe, Asia and the United States. Services include pre-delivery inspection, shipment preparation, storage, forwarding, customs clearance, cargo prioritisation, freight forwarding, and bookings for on carriage by road, rail and barge.

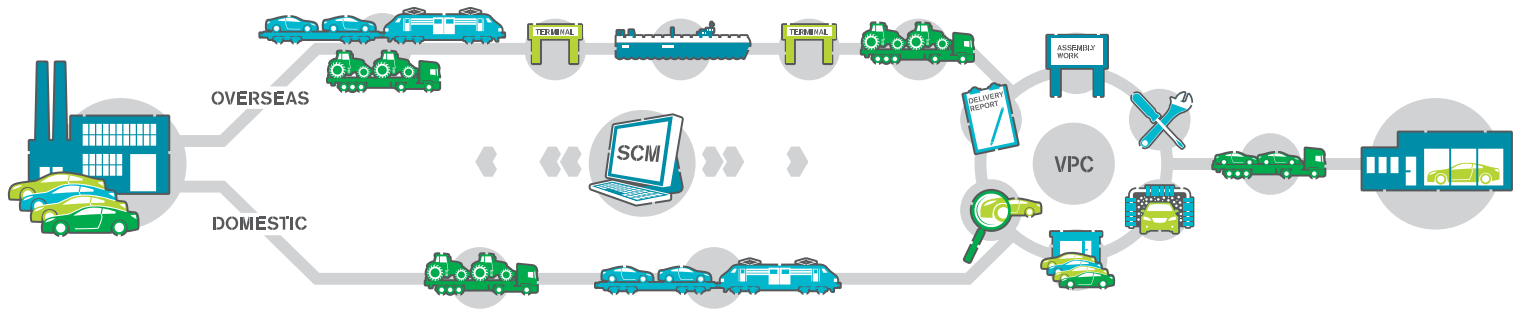
Technical services

Each year, 3 million vehicles and rolling equipment pass through our processing centres in preparation for final sale. Located in all major markets, these centres provide specialised services for new vehicles, refurbishment and repair of used vehicles, inplant services, customization of agricultural and construction equipment, and storage and maintenance.



WALLENIUS WILHELMSSEN
LOGISTICS

» from » factory » to » dealer



IN BRIEF

- » 4 million units transported each year; 2 million by sea and 2 million inland
- » 3 million automotive and rolling equipment processed annually
- » More than 60 vessels in its fleet
- » 2 billion USD in annual revenue
- » 3 000 employees worldwide

Inland distribution

Moving 2 million vehicles and equipment safely and reliably to the point of sale requires first-class connections. From factory to port and from port to dealer, we have an extensive inland transportation network. This includes our own modern fleet of trucks as well as those of our preferred partners. By working with reputable partners, we also offer excellent rail and barge services at certain ports.

Quality assurance

Quality is an essential element of our business. WWL aims for excellence throughout every aspect of our operations – from cargo handling procedures and make-ready services to integrated real-time information systems and total supply chain management.

Consistently providing high quality services requires quality customer care. Our commitment to customer care is therefore embodied through how we perform services, how we provide access to information, and how we treat people.

An environmental forerunner

As a major supplier of transportation services, WWL bears a clear responsibility for reducing the impact of its operations on the environment. Our commitment to environmental care extends beyond company operations. As the sole sponsor of WWF's High Seas Conservation Programme, WWL supports activities to promote marine conservation of the high seas.

Wallenius Wilhelmsen Logistics (WWL) is a leading independent provider of global factory-to-dealer transport solutions for the automotive, agricultural and construction equipment industries. The company also specialises in handling complex project cargoes such as rail cars, power generators, mining equipment and yachts. WWL's sophisticated supply chain management services ensure an efficient integration of ocean transportation, inland distribution, terminal handling and a large comprehensive range of specialised technical services.

www.2wglobal.com



**WALLENIUS WILHELMSSEN
LOGISTICS**